

DESIGN FESTIVAL 2011

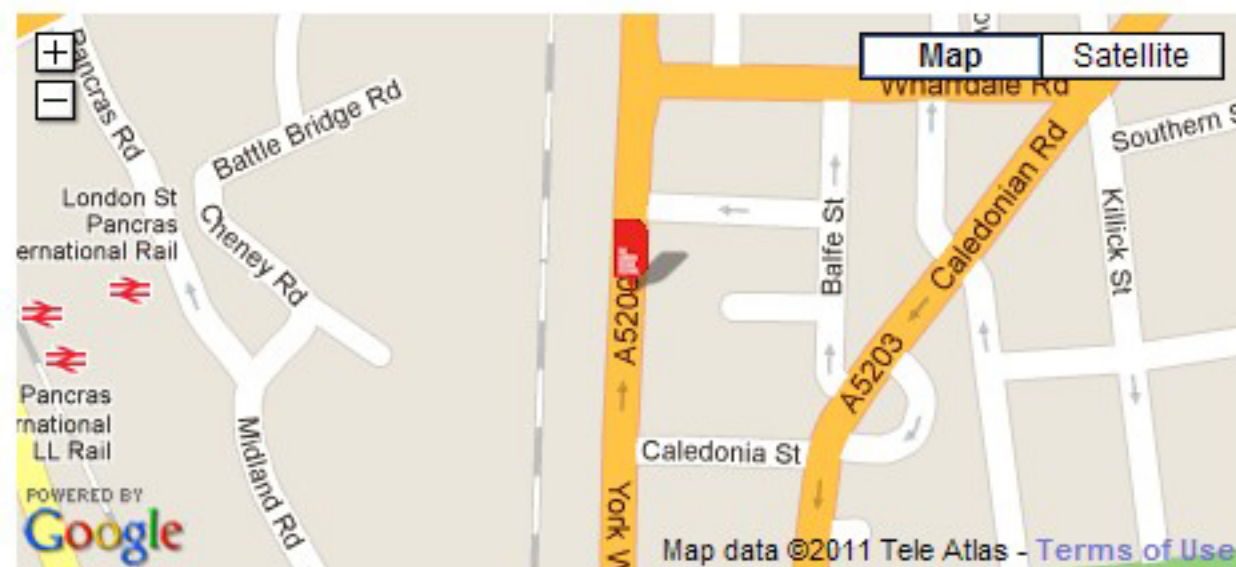
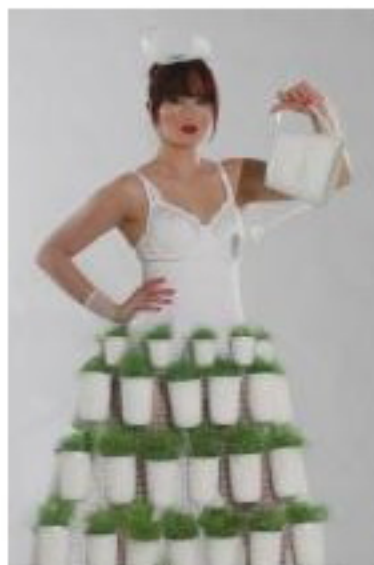
The London Design Festival
17–25 September 2011

[Home](#) [London Design Festival 2011](#) [News](#) [About](#) [Blog](#) [Press](#) [Search](#)



Ecopink e-side

An exhibition+shop which focuses on the creativity of women, bringing a uniquely ethical-ecological approach to design



[Add to itinerary](#)

[Print this page](#)



SHARE

e-side is an innovative, online concept store, sourcing and celebrating the work of international designers who are creating beautiful and memorable pieces from carefully sourced, kind-to-the-environment materials to inspire contemporary homes.

e-side, in collaboration with the Hub King's Cross, present Ecopink, an exhibition+shop which from its Milan launch, has focussed on the creativity of women, using the alchemy of art and design to transform waste, surplus or recycled into desirable. Jewellery; furniture; fashion elements; installations and accessories all spotlight women's demonstrably different perspective on design.

Ecopink has, in a short time, established an enviable reputation, attracting artists of the highest calibre and building a buzz of creative energy, cultural exchange and collaboration.

Together with their artists and designers, e-side and Ecopink bring a uniquely ethical-ecological and vital approach to design, form, function and vision.

e-side

[View partner profile](#)



Hub Kings Cross
34b York Way
London
N1 9AB
United Kingdom
Phone: +44 (0) 207841
3450

24 September - 25 September

Opening times: Sat 10am - 6pm Sun 10am - 5pm

Ticket information: Free entry